



Mobilities and Immobilities in an Era of Polycrisis

IMISCOE Spring Conference
17-19 April 2024

IMISCOE



**KOÇ
ÜNİVERSİTESİ**



MiReKoc

WELCOME MESSAGE



The Organizing Committee cordially welcomes all participants to the 2024 IMISCOE Spring Conference at Koç University Campus in Istanbul. The conference theme, “Mobilities and Immobilities in an Era of Polycrisis,” has been thoughtfully chosen to focus scholarly attention on contemporary global issues that have significantly influenced the agendas of migration studies. As a longstanding member of the IMISCOE Network, the Migration Research Centre at Koç University has undertaken the responsibility of hosting the 2024 IMISCOE Spring Conference in Istanbul.

In recent years, our lives have been shaped by various extraordinary events characterized as “crises,” including extreme climate conditions, pandemics, conflicts, political upheavals, and economic instabilities. These events have not only directly impacted daily life but have also stimulated numerous discussions in public, policy, and scholarly spheres. Amid this intricate landscape of multiple crises, issues of mobility and immobility in relation to migration have emerged as focal points within migration studies.

This conference delves into the dynamics of (im)mobility during crises, investigating forced movements, assistance requirements, and obstacles to movement encountered by individuals and their families. It also scrutinizes the political dimensions, public discourse, and policy implications surrounding global migratory trends. Migration has become entwined with crisis narratives across diverse contexts, necessitating a critical examination of metaphorical linkages and empirical realities. By centering on mobility and immobility rather than simplistic notions of a “migration crisis,” our objective is to facilitate the construction of critical discourses and enhance understanding within specific contexts.

The 2024 IMISCOE Spring Conference proposes to explore the impact of multiple, compound and overlapping crises on generating complex, nuanced and multi-directional actions within the mobility spectrum, such as emigration; return; forced displacement; or immobility. We believe that this conference in Istanbul will present a unique opportunity for attendees to engage in scholarly discourse, exchange ideas, and foster meaningful connections within the academic community in migration studies. As we commemorate the 20th anniversary of the Migration Research Centre at Koç University (MiReKoc), we also celebrate the contributions of IMISCOE and MiReKoc members to the field of migration studies.

Organizing a conference of this magnitude is a substantial endeavor, and we express our sincere gratitude to the Organizing Committee, International Scientific Committee Members, IMISCOE Conference Trustee, paper reviewers, members of the IMISCOE Board of Directors and Executive Board, colleagues at the IMISCOE Network Office in Liege, our colleagues and students at MiReKoc, and all conference participants for their invaluable contributions. This conference is poised to be a forum for scholarly debates, networking, and exploration of research avenues, and we trust that all participants will find it both productive and enjoyable.

On behalf of the 2024 IMISCOE Spring Conference

Prof. Dr. Ahmet İçduygu
Director, MiReKoç

EXPANDING HORIZONS FOR OUR IMISCOE COMMUNITY

*Reflections from IMISCOE Coordinators Jean-Michel Lafleur and Daniela Vintila, and the IMISCOE Network Officer Angeliki Konstantinidou
Centre for Ethnic and Migration Studies (CEDEM), University of Liège*

The IMISCOE Network Office at the University of Liège is delighted to cooperate with MiReKoç at Koç University in Istanbul for the organization of the 2024 IMISCOE Spring Conference. While MiReKoç hosted several IMISCOE PhD Schools in the past, it is an important milestone for our Network to see an IMISCOE Spring Conference taking place for the first time in Turkey. This achievement was made possible thanks to the joint efforts of IMISCOE governing bodies and MiReKoç, a longstanding member of our community with whom we, at the Network Office, had the pleasure to collaborate for the planning of this event.

Our IMISCOE community is also reaching new horizons with the conference topic proposed by the colleagues at MiReKoç: “Mobilities and Immobilities in an Era of Polycrisis”. This timely theme has attracted an impressive interest for our 2024 Spring Conference among scholars from different disciplinary backgrounds and countries around the world. As such, the conference promises very rich exchanges, with stimulating panels, keynotes and plenary sessions during which we will reflect on different facets regarding the implications of multiple and overlapping crises on migration and mobilities.

Since our last gathering at the 2023 IMISCOE Annual Conference in Warsaw, our research community has continued to expand its horizons also in other aspects, thanks to a very fruitful collaboration that we established with our Member Institutes, the individual members of our Network, as well as our Standing and Executive Committees. Among several other recent achievements, we have had the immense pleasure to see our new Standing Committee Race, Racism and Discrimination (RACED) start its work, our community warmly welcoming its first Member Institute in Latin America (Casa Grande Ecuador), our highly-regarded IMISCOE book series continuing to publish manuscripts of excellent scholarly quality, and our PhD Network and PhD Academy continuing to expand and be the reference when it comes to supporting young scholars in the field of migration studies.

The 2024 Spring Conference is also an important milestone for our Network Office in Liège. After two years in our role as coordinators of the IMISCOE Network, we can see the tangible progress made on achieving our goals to make IMISCOE more open, diverse, and inclusive- the primary objective that we set for ourselves at the beginning of our mandate. Much remains to be done in the years to come, but together with our incredibly supportive community, we are ready to work towards new horizons for our international and interdisciplinary Network.

We wish you all an excellent IMISCOE Spring Conference!

Jean-Michel Lafleur, Coordinator of IMISCOE
Daniela Vintila, Associate Coordinator of IMISCOE and Senior Network Officer
Angeliki Konstantinidou, Network Officer

ABOUT KOC UNIVERSITY

Koç University, established in 1993 in Istanbul, Turkey, is a renowned private, non-profit institution known for its commitment to research, education, and comprehensive academic programs. The university's educational philosophy is rooted in the principles of creative teaching and participatory learning. Since its inception, Koç University has embraced a progressive, student-centered approach that fosters critical thinking, research, and creativity. The institution places great importance on cultivating an inquisitive mindset, promoting intellectual discourse, and encouraging active engagement in extracurricular activities. A liberal arts education is considered fundamental to this pursuit. Additionally, Koç University places a strong emphasis on collaboration with international institutions and regularly hosts lectures delivered by globally recognized academics and business leaders, thus enriching the educational experience.

Koç University is internationally acclaimed for its cutting-edge research conducted across its various colleges, which encompass Administrative Sciences & Economics, Engineering, Natural Sciences, Humanities & Social Sciences, Law, Nursing, and Medicine. The university has made significant contributions to the advancement of education, knowledge, and service, both within Turkey and on a global scale. Koç University's accreditations and memberships further validate its standing as a distinguished institution.

Noteworthy features of Koç University include its low student-faculty ratio of 12 to 1, the English-medium instruction across all programs (excluding Nursing and Law), and a faculty comprised of experts with advanced degrees from prestigious Ivy League universities in the United States and top-ranked institutions in Europe. The university boasts an impressive infrastructure, with 194 research laboratories equipped with state-of-the-art resources, as well as 21 Research Centers and 5 Research and Education Forums. Koç University also maintains collaborations with 270 internationally renowned partners for student exchange and research collaboration. The institution's commitment to research excellence is evidenced by its strong publication record and citation impact, consistently ranking among the top three universities in Turkey. Furthermore, Koç University has secured external funding for 801 research projects, totaling a value of 50 million USD, and proudly hosts 8 out of the 16 European Research Council (ERC) grants awarded in Turkey. The exceptional caliber of its faculty is demonstrated by the fact that 16 out of the 90 members of the Turkish Academy of Sciences are affiliated with Koç University. Lastly, the university offers scholarships to attract high-achieving international students to its undergraduate and graduate programs.

ABOUT MIREKOC

Migration Research Center at Koç University, MiReKoc, was established in Istanbul in 2004 with the aim of advancing the field of migration studies in Turkey and beyond. Initially solely focusing on the Turkish context, MiReKoc has expanded its scope to include other countries and regions, making significant theoretical and empirical contributions to the migration literature. The Center advocates for multidisciplinary and interdisciplinary research on migration.

MiReKoc strives to enhance the state of migration research through original and innovative scholarship, academic collaboration, and dialogue among researchers, policymakers, international organizations, and civil society actors. Situated in Istanbul, MiReKoc serves as an institutionalized hub, fostering capacity-building and encouraging interinstitutional dialogue on migration research. The Center promotes scholarly work and collaboration in the field through various activities, including research projects, publications, seminars, conferences, and annual summer schools designed for PhD students and young professionals.

In 2010, MiReKoc received accreditation from the Turkish Council of Higher Education as a research center dedicated to migration issues. Since then, it has played a prominent role in the burgeoning field of migration studies in Turkey and has established itself as an international research center. MiReKoc is a member of esteemed international research and policy networks such as Metropolis and IMISCOE. Over the years, MiReKoc has successfully completed more than 85 projects, including those funded by FP7, Horizon, and TUBITAK, among others. Currently, the Center is involved in 15 ongoing projects, including those funded by Erasmus+, Horizon 2020, and TUBITAK. MiReKoc's members have published over 20 books, more than 150 scholarly articles, numerous book chapters, research reports, and policy briefs. Since 2020, MiReKoc has been the editorial steward of International Migration, one of the oldest scholarly journals in the field, supported by the International Organization for Migration since 1961.



ORGANIZATION COMMITTEE

Ahmet İçduygu, Koç University, Istanbul
Ayşen Üstübici, Koç University, Istanbul
Birce Altıok, Koç University, Istanbul
Birce Demiryontar, Koç University, Istanbul
Ceren Kulkul, Koç University, Istanbul
Deniz Sert, Ozyeğin University, Istanbul
Maryam Ekhtiari, Koç University, Istanbul
Murat Can Kaya, Koç University, Istanbul
Müge Dalkıran, Koç University, Istanbul
Sernaz Arslan, Koç University, Istanbul
Souad Osseiran, Koç University (MiReKoç)/Boğaziçi University, Istanbul

SCIENTIFIC COMMITTEE

Ayhan Kaya, Bilgi University, Turkey
Diletta Marcucci, Pompeu Fabra University, Spain
Dušan Drbohlav, GEOMIGRACE, Charles University Prague, Czechia
Eleonore Kofman, Middlesex University, UK
Ibrahim Awad, American University in Cairo, Egypt
Lea Müller-Funk, Danube University Krems, Austria
Lucinda Fonseca, IGOT, Universidade de Lisboa, Portugal
Marco Martiniello, University of Liege, Belgium
Marta Bivand Erdal, Peace Research Institute Oslo (PRIO), Norway
Marie McAuliffe, IOM, Switzerland
Özge Bilgili, ERCOMER, Utrecht University, The Netherlands
Paweł Kaczmarczyk, Centre of Migration Research at the University of Warsaw, Poland
Ricard Zapata-Barrero, Universitat Pompeu Fabra, Spain

IMISCOE BOARD TRUSTEE

Başak Bilecen, University of Groningen, The Netherlands

VENUE



Main Campus Address: Rumelifeneri Yolu 34450 Sarıyer İstanbul Turkey
Tel: +90 212 338 1000

Google Maps: <https://goo.gl/maps/NQwoqq8AYSEsfEFo8>



1 Founders Hall



2 CASE



KEYNOTES AND PLENARY SPEAKERS

KEYNOTES



Anna Triandafyllidou

Toronto Metropolitan University

What crisis? Whose (im)mobility?

There is a perceived close connection between migration and crisis. Crises are seen as causing people to move and migration is also seen as a crisis. However the relationship between migration and crisis/es is a complex one and I would like to raise four main points in this lecture. First, migration is not a crisis but a normal and positive part of human development. Second, we need to conceptually discuss what poly crisis means: do we see migration as embedded in a wider context of multiple 'crises' like the environmental crisis, the democracy crisis, the health crisis, the economic crisis, or do we see crisis as inherent in the migration process for instance when we speak of a crisis of solidarity or a refugee crisis. Third, crises lead to more mobility but often also to more immobility so it is important to nuance our understanding of the relationship between crisis and human (im)mobility. Fourth, we need to engage with a dynamic view of migrants as resilient and active decision makers who navigate both crises and migration policies – thus I propose to see crises as nodal points in a complex and multi-leg process of migration rather than as one-off events that may trigger a response.

● Short Bio

Anna Triandafyllidou holds the Canada Excellence Research Chair in Migration and Integration, at Toronto Metropolitan University. She is also the Scientific Director of a \$98.4 mln multi-University and multi-partner Program entitled Bridging Divides funded by the Canada First Research Excellence Fund. Prior to joining TMU in 2019, she held a Robert Schuman Chair at the European University Institute, in Florence, Italy. She is Editor of the Journal of Immigrant and Refugee Studies. In 2021, the University of Liège awarded Triandafyllidou a doctorate honoris causa in recognition of her contribution to migration scholarship. She has published widely on migration governance and migrant integration.



Jørgen Carling

Peace Research Institute Oslo (PRIO)

Theorizing Immobility In Migration Studies: Is Staying the Opposite of Leaving?

Over the past decades, migration studies has made diverse steps towards engaging actively with immobility. Most people do not migrate internationally, of course, and this is an enduring fact. What has changed, is the increasing recognition that staying is not the same as 'doing nothing' from a migration perspective. Staying can be imposed, staying can be an active choice, and staying can take forms that defy this binary.

Staying and leaving can both be causes as well as consequences of crises. Crucially, the meaning of staying is always inseparable from the prospect of leaving. When I ask, in the title, whether staying the opposite of leaving, the answer is – unsurprisingly – 'yes and no'. It is the tension between staying leaving that opens a space for exploration and reflection. In this keynote I am drawing on my changing understanding in the course of diverse research on migration – including theory building, encounters with people who stay and leave, and the development of methodology that, in turn, feeds back into theory. I am engaging with the valuable contributions of Diana Mata-Codesal, Kerilyn Schewel, Daniel Robins, and other scholars who have also embraced immobility as an object of study. A key take-away is that, if the scope of migration studies is defined by 'migration', this must be understood not only as the physical movement of people, but also as the prospect of mobility that defines the meaning of staying.

● Short Bio

Jørgen Carling is Research Professor at the Peace Research Institute Oslo (PRIO) and Co-Director of the PRIO Migration Centre. His research covers diverse aspects of global migration and transnationalism, combining ethnography, statistical methods, and theory development. He has authored more than fifty scientific publications and been a visiting scholar at the University of Oxford, the National University of Singapore, and the University of Maastricht. He currently leads the large projects Aligning Migration Management and the Migration–Development Nexus (MIGNEX) and Future Migration as Present Fact (FUMI).



Ibrahim Awad

American University in Cairo

Mobility and Immobility In the Euro-Mediterranean Region

The European Union's (EU) Global Approach to Migration and Mobility (GAMM) provides for combatting irregular migration and expanding channels of legal migration. These two elements of GAMM signify that only the mobility of migrants through legal channels is authorized into the EU. Other potential migrants should remain, immobile, in the Southern and Eastern Mediterranean countries. The EU and member states attempt to enforce this immobility of

potential migrants through externalizing their borders as well as via promoting job creation and improving terms and conditions of employment in its South and East Mediterranean partner countries. They also seek to improve the living and employment conditions of so-called transit migrants and refugees hosted in these countries. The EU Trust Fund and some individual member states finance projects to these effects, in Egypt for example. The success of the EU's efforts is relative. Egypt's coasts are hermetically closed to unauthorized departures to Europe. But determined individuals cross the borders to Libya and from there the Mediterranean to Italy. Neither the mobility or immobility of the highly-skilled is addressed in the relations between the Euro-Mediterranean partners. But the highly-skilled individuals' mobility proceeds without hindrance. It is even sought and encouraged, motivated by the needs of European labor markets. This is not to say that these labor markets do not need low-skilled migrants. Policies seek the immobility of LSM and the labor markets' functioning need their mobility. The consequence is migration in irregular situations.

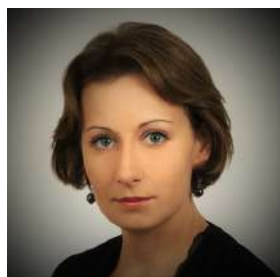
● Short Bio

Ibrahim Awad is at present Professor of Global Affairs and Director, Center for Migration and Refugee Studies, School of Global Affairs and Public Policy, at the American University in Cairo.

He holds a BA degree in political science from Cairo University and a PhD degree in political science from the Graduate Institute of International Studies, University of Geneva, Switzerland.

He has worked for the League of Arab States, the United Nations and the International Labour Organization, serving in Argentina, Spain, Switzerland, Lebanon and Egypt. The last positions he held in the United Nations System were Secretary of the Commission, UN-ESCWA, Director, ILO Sub-regional Office for North Africa and Director, International Migration at the ILO Headquarters.

He is Chair of the Steering Committee of the Euro-Mediterranean Research Network on International Migration (EuroMedMig) and Senior Fellow at the Migration Policy Centre (MPC) of the Graduate Institute of International and Development Studies in Geneva. From 2019 to 2023, he was Chair of the Labor Migration Working Group of the Global Knowledge Partnership on Migration and Development (KNOMAD), hosted by the World Bank. He also serves on the advisory boards and editorial boards of several international academic institutions and journals.



Marta Pachocka

SGH Warsaw School of Economics and University of Warsaw

EU and Forced Migration Governance in Times of Polycrisis: From the European Agenda on Migration to the New Pact on Migration and Asylum?

The dynamics of the complex migration situation in the European Union (EU) and its neighbourhood for over a decade now, often referred to as a "crisis", require a revision of the entire migration-governance strategy at the level of the EU and its member states. This involves modifying the existing solutions (legal and institutional) and adopting new

instruments. We will consider to what extent and in what context we can talk about the EU's (in)coherent migration strategy (and policy). Against this backdrop, we will look especially at the (r)evolution of the EU's approach to forced migration governance between 2014 and 2024, taking into account the context of two European Commission's Communications - the European Agenda on Migration (2015) and the New Pact on Migration and Asylum (2020). What has come out of them, and where are we today? Can the EU effectively deal with migration-related challenges in times of polycrisis?

● Short Bio

Dr Marta Pachocka – economist and political scientist. Assistant Professor in the Department of Political Studies, the Institute of International Studies of the Collegium of Socio-Economics of SGH Warsaw School of Economics. Co-coordinator of the Laboratory of Urban and Regional Migration Policies at the Centre of Migration Research (CMR) of the University of Warsaw (UW), and former Head of the Migration Policies Research Unit at CMR (2018-2022). She has considerable experience as both a team leader and member in implementing cross-sector and multi-stakeholder projects co-funded by the National Science Centre (Poland), National Bank of Poland, Capital City of Warsaw, various ministries, EU Programmes (Horizon 2020, Horizon Europe, Lifelong Learning Programme, Erasmus+, Creative Europe), and others. Co-coordinator of the Horizon 2020 Welcoming Spaces project at SGH (2020-2024). Principal Investigator in the Horizon Europe GAPs project at CMR UW (2023-2026). She is on the Board of the Polish European Community Studies Association (PECSA) and the Research Committee RC46 "Migration and Citizenship" of the International Political Science Association (IPSA). She supports the European Commission Representation in Poland as an EU expert member of the Team Europe Direct Poland network. Research interests: migration studies and European studies.



Muhammad Zaman

Boston University

The Role of Trust and Social Network in Healthcare Access Among the Forcibly Displaced

Healthcare access among forcibly displaced communities is often shaped by dimensions of trust; trust in their own social network, trust or mistrust in information, trust or distrust of local authorities and trust or mistrust in technology to name a few. Using a series of case studies from Pakistan, Colombia, Lebanon and South Sudan, this talk will explore the sources of trust and distrust and how it affects access to healthcare. This talk will also analyze the

impact of technology and information on simultaneously improving and undermining trust, especially among the stateless communities. Finally, this talk will discuss how the healthcare access to forcibly displaced communities can be improved through an integrated system that prioritizes trust.

● Short Bio

Dr. Muhammad Zaman is an HHMI professor of Biomedical Engineering and Global Health at Boston University and the Director of Center on Forced Displacement at Boston University. He received his master's and P.h.D from the University of Chicago. His research focuses on disease dynamics, and barriers and access to healthcare among migrating and forcibly displaced communities. In addition to five books and over 140 peer-reviewed research articles, Professor Zaman has written extensively on innovation, refugee and global health in newspapers around the world. His newspaper columns have appeared in over 30 countries and have been translated into eight languages. He has won numerous awards for his teaching and research, the most recent being Guggenheim Fellowship (2020) for his work on antibiotic resistance in refugee camps.



Peter Scholten

Erasmus University Rotterdam

Understanding Crises; A Complexity Perspective On Crises In Migration and Diversity Governance

How can we develop a better understanding of crises in migration and (migration-related) diversity governance? This talk takes a complexity perspective on how crises are manifestations of friction in dealing with (social complexity). Migration crises are often not so much about migration per se, but rather about conflicts between modern visions on

(national) migration control and diversity management (integrationism) and postmodern realities of mobility, superdiversity and globalization. I will discuss how and why the complexification of migration and diversity often leads to alienation and 'crisis-sensation', such as in the case of European migration management and the struggle to come to terms with integrationism and superdiversity. I will also discuss how and why complexity governance, such as in the form of governance mainstreaming, can offer an alternative perspective on the governance and politics of migration and diversity.

● Short Bio

Peter Scholten is full professor in the governance of migration and diversity at Erasmus University Rotterdam. He is director of the Leiden-Delft-Erasmus center on Governance of Migration and Diversity and coordinator of the European University of Post-Industrial Cities. Within Erasmus University, he is academic lead of the interdisciplinary team on Policy, Politics and Society. Also Peter is editor in chief of the journal Comparative Migration Studies and associate editor of the Journal of Comparative Policy Analysis. He has published extensively on themes as multi-level governance, urban inclusion and anti-discrimination, and on the development of migration studies as a research field.



Deniz Sert
Özyeğin University



Didem Daniş
Galatasaray University

Shattered Ground, Shifting Lives: Exploring Post-Earthquake Mobilities and Immobilities

This paper discusses the challenges faced by Syrian refugees in Turkey following a series of earthquakes in 2023. It highlights the multiple displacements experienced by Syrian refugees, discrimination, hate speech, and deprivation of aid and protection they encountered post-earthquake. It also addresses the issues of forced mobility –and immobility, violations of rights, and the lack of regulatory mechanisms for movement and humanitarian aid for refugees in Turkey. The paper emphasizes the uncertainties, challenges, and discriminatory practices faced by Syrian refugees in the aftermath of the earthquakes, shedding light on the complex situation they find themselves in because of (1) manifestation of existing social inequalities, i.e., the earthquakes highlighted and magnified pre-existing social disparities in the region; (2) economic, social, and psychological loss experienced by millions; (3) loss of homes and livelihoods; (4) discrimination and hate speech; (5) legal regulations issued after the earthquakes that justified the differential treatment of Syrian refugees, further deepening social disparities. All these inequalities after the earthquake affected not only the mobility of refugees but also their immobility, causing many to stay in the earthquake zone despite very poor living and survival conditions.

● Short Bio

Deniz Sert is a Professor at the Department of International Relations, Ozyegin University, Istanbul. Before joining OzU, she was a Senior Research Associate at the Migration Research Center, Koç University, MiReKoc. An expert on migration issues in Turkey and globally, she has taught and researched at several institutions domestically and abroad. She received her BA in International Relations from Koç University, an MSc in European Union Policy Making from the London School of Economics, and an MPhil in Political Science from the City University of New York. She got her PhD in Comparative Politics from the City University of New York. She has published extensively on international migration within Turkey and its regions. She was a Jean Monnet Chair on Migration and Mobility, CHARM (2019-2022). She is also an editor at the IOM's renowned SSCI journal, International Migration.

● Short Bio

Didem Daniş is a sociologist whose teaching and research activities evolve around the topics related to migrations in Turkey. She currently works as associate professor at Galatasaray University, Sociology Department, in Istanbul. After her undergraduate education at Bogazici University (Istanbul), she received her master degree at METU (Ankara) and completed her doctoral thesis at Ecole des Hautes Etudes en Sciences Sociales (Paris) in 2008.

She has extensive experience of teaching and research collaborations in Europe and the Middle East. Didem has published numerous articles in academic journals on Iraqi and Syrian refugees, with a focus on state's role, immigration and integration politics, as well as migrants' local and transnational social networks. She edited five books in Turkish on borders, migration management, migrant integration and recently on the mobility of Turkish qualified migrants. She is the founder of the Association for Migration Research ([GAR](#)), which focuses on the production of critical knowledge on migratory processes.



Giovanni Bettini
Lancaster University

Climate (Im)mobilities: Displacement, Escape and Mobility in the Climate Emergency

How will the impacts of climate change intersect with human (im)mobilities, in an era of multiple planetary crisis? Engaging with this question, this intervention will introduce debates on 'climate migration', which refers to the multiple and complex ways in which climate change will influence human mobility. Tracing the genealogy of today's debates, I will problematize widespread assumptions and narratives through which the climate-migration nexus is often understood, and sketch out contrasting scenarios on how the climate emergency – intertwined with other societal and planetary crises and processes – might contribute reshaping (im)mobility.

● Short Bio

Dr Giovanni Bettini is Senior Lecturer in International Development and Climate Politics at Lancaster University, UK. In his research Giovanni has been investigating how environmental change – in its planetary but uneven character, and entangled with a series of contemporary crises and historical legacies – is generating new spaces, modes of governance, inequalities, and forms of resistance. He has published extensively on the links between climate change and human mobility. Giovanni coordinates the Leverhulme Trust-funded project Digital Climate Futures: a decolonial and justice perspective on digitalised climate change adaptation, which explores the role of the digital in reshaping adaptation, resilience and justice. He also serves as Associate Director at the Centre for Mobilities Research (CeMoRe), at Lancaster University.



Soorej Jose Puthooppambal

University of Upsala

How does health 'crises' influence migration? - An Overview

The intersection between health crises and migration has become increasingly relevant in global discourse. This talk will provide an overview of how health crises might influence migratory patterns. Health crises, such as pandemics or epidemics, exert multifaceted impacts on migratory dynamics. Firstly, they can act as push factors, compelling individuals or communities to flee affected regions due to heightened health risks, inadequate healthcare infrastructure, or socio-economic disruptions. Conversely, health crises may also serve as pull factors, drawing migrants towards countries with better healthcare systems or perceived safety from the spread of diseases.

The response to health crises could range from providing protection, safe transit or stay or affordable care in another country to implementation of restrictive border management measures. These measures can exacerbate existing vulnerabilities among migrants, particularly those in irregular or precarious situations. Additionally, health crisis could lead to xenophobic sentiments and discriminatory policies, further shaping migration patterns and experiences. Understanding the intricate relationship between health crises and migration is crucial for effective policy responses that prioritize an inclusive public health approach, highlighting the need for holistic approaches that address the interconnected challenges of health, migration, and global solidarity.

● Short Bio

Soorej Jose Puthooppambal is a lecturer in global health and migration and programme coordinator for the master's programme in Global health at the Dept. of Women's and Children's Health at Uppsala University, Sweden. He is also head of the WHO Collaborating center on Migration and Health Data and Evidence. He has led the development of several evidence reviews and guidance, such as the first WHO regional report on the health of refugees and migrants in the WHO European region and the first WHO Global report on refugee and migrant health. He has also authored international guidance for issues such as integration of refugee and migrant data into national health information systems and health in immigration detention. In addition to teaching migration & health and public health in humanitarian action, his current research focuses on health in immigration detention centers, voluntary and forced return migration, health communication during crisis and healthcare access and utilization among refugees and host communities in displacement settings. Soorej is the EU lead for European Union (EU)- African Union (AU) Cluster of Research Excellence (CoRE) on migration and health across EU-AU. His previous assignments include overseeing the research and evidence generation agenda of the Migration and Health Programme at WHO Regional office for Europe and working with IOM to conduct country assessments. He continues to provide technical support for WHO and other national and international agencies on questions related to migration and health.



Tamirace Fakhoury

Aalborg University

Refugee Policy and Temporalities of Mobility and Immobility

This presentation engages with how policymaking constructs the condition of being a refugee through temporalities of accelerated and dormant crises. I draw on the case of Lebanon to describe refugee temporalities of waiting, rupture, coerced mobility and forced immobility. Through illustrative examples, I then turn to how the Lebanese states uses time and time horizons to construct narratives of crisis management, crisis prevention and crisis exacerbation around the refugee policy field.

● Short Bio

Tamirace Fakhoury is Associate Professor of International Politics and Conflict at the Fletcher School of Law and Diplomacy at Tufts University. Before joining Fletcher, she was Associate Professor of Political Science at Aalborg University in its Copenhagen Campus (Denmark). She also held the Kuwait Chair at Sciences Po in Paris from 2020 until 2022 where she is still an adjunct professor. Prior to this, Tamirace was Associate Professor at the Lebanese American University and the director of the Institute for Social Justice and Conflict Resolution (ISJCR). From 2012 until 2016, she was a visiting Assistant Professor in the summer sessions at the University of California in Berkeley. Tamirace is the recipient of several research awards and fellowships such as the Carlsberg Monograph fellowship in Denmark, the post-doctoral Jean Monnet Fellowship at the European University in Florence and the Alexander von Humboldt fellowship at the German Institute of Global and Area Studies in Hamburg. Her core research and publication areas are: Power-sharing and ethno-sectarian conflicts; migration and refugee governance; the European Union's conflict resolution and migration policy in the Mediterranean; Middle East politics.

TIMETABLE

DAY 1

Wednesday 17th April

09.00-12.00

IMISCOE Board Brainstorming Session + PhD Network

12.00-13.00



Lunch Break for BD and PhD

13.00-15.00

IMISCOE Board Meeting

15.00-15.30

Conference Registration + Coffee Break

15.30-16.00

Opening

16.00-17.30

Plenary Session I: Polycrisis in an Age of (Im)mobilities

18.00-19:45



Dinner

DAY 2

Thursday 18th April

09.00-10.15

Opening Keynote

10.15-10.30



Coffee Break

10.30-12.00

Parallel Panels A

12.00-13.00



Lunch Break

13.00-14.30

Plenary Session II: Crisis Politics and the Future of Migration

14.30-14.45



Coffee Break

14.45-16.15

Parallel Panels B

16.15-16.30



Coffee Break

16.30-18.00

Parallel Panels C

18.00-19:45



Dinner

DAY 3

Friday 19th April

09.00-10.15

Closing Keynote

10.15-10.30



Coffee Break

10.30-12.00

Parallel Panels D

12.15-12.45

Closing the Conference

12.45-13.45



Lunch

CONFERENCE PROGRAM

DAY 1
17.04.2024

	Venue	Time
IMISCOE Board Brainstorming Session	Founders Hall 2nd Floor	09.00-12.00
IMISCOE PhD Network	CASE Z48	09.00-12.00
LUNCH	Founders Hall	12.00-13.00
IMISCOE Board Meeting	Founders Hall 2nd Floor	13.00-15.00
Conference Registration + Coffee Break	Founders Hall	15.00-15.30
OPENING	Founders Hall	15.30-16.00

PLENARY SESSION I Polycrisis In An Age of (Im)mobilities

Venue: Founders Hall **Time:** 16.00-17.30 **Chair:** Ahmet İçduygu (Koç University)

This plenary is dedicated to the memory of our dear MiReKoç colleague and friend Dr. Seçil Paçacı Elitok who recently passed away in the US

Peter Scholten (Erasmus University Rotterdam) - *Understanding Crises; A Complexity Perspective On Crises In Migration and Diversity Governance*

Ibrahim Awad (American University in Cairo) - *Mobility and Immobility In the Euro-Mediterranean Region*

Marta Pachocka (SGH Warsaw School of Economics and University of Warsaw) - *EU and Forced Migration Governance in Times of Polycrisis: From the European Agenda on Migration to the New Pact on Migration and Asylum?*

Muhammed Zaman (Boston University) - *The Role of Trust and Social Network in Healthcare Access Among the Forcibly Displaced*

	Venue	Time
DINNER	CASE 124	18.00-19:45

DAY 2
18.04.2024

KEYNOTE SPEECH

Venue: Founders Hall Time: 9.00-10.15

Jørgen Carling (Peace Research Institute Oslo (PRIO))- *Theorizing Immobility In Migration Studies: Is Staying the Opposite of Leaving?*

PARALLEL PANELS A1 **Governing the Local: Spatial Dimensions of Changing Mobilities**

Venue: Founders Hall 2nd Floor Hour: 10.30-12.00 Chair: Ayselin Yıldız (İstinye University)

Loren B. Landau (Universities of the Witwatersrand and Oxford) & **Caroline Kihato** (ODID, Oxford University) - *An Atlas of Uncertainty: Spatio-Temporal Journeys into and through African Cityscapes*

Denis Zeković (DeZIM Institute) & **Larissa Kokonowskyj** (DeZIM Institute) - *Navigating New Realities in Times of Crises: Local-level Governance Challenges and Adaptations in the Face of Ukrainian Refugee Migration*

Philipp Piechura (Hafencity University, Hamburg) - *Re-Thinking the Intersection of Migration and Housing Crisis from the Point of Alternative Housing Projects in Germany*

Iris Egea Quijada (Vrije Universiteit Brussel) - *Sustainable Rural Communities: Comparing Migrant Receptivity and the Revitalisation of Two Rural Towns in Spain and Ireland*

PARALLEL PANELS A2 **Labor Amidst Demographic and Political Changes**

Venue: CASE124 Time: 10.30-12.00 Chair: Ibrahim Awad (American University in Cairo)

Anastasia Blouchoutzi (University of Macedonia) & **Christos Nikas** (University of Macedonia) - *Systemic Unsustainability and Migrant Labor Market Integration: The Case of Greece*

Dorothea Pozzato (Scuola Normale Superiore) - *Making Policies on Labour Immigration In A Time of Crises. The Multi-layered Impacts of Compounded Crises In Italy, Denmark, and Poland.*

Attila Melegh (Corvinus University of Budapest) & **Zoltán Csányi** (Corvinus University of Budapest) - *Migration Anxieties In Eastern Europe and Marketization. Material Grounds for An Anti-migrant Turn In A Global-historical Perspective?*

Anita Brzozowska (University of Warsaw, Centre of Migration Research) - *The Role of Employers In (Re)shaping Discourses and Public Policies Targeting Desirable Migrants In Times of Crisis In the United Kingdom*

PARALLEL PANELS A3 **Climate Change as a Driver of Migration: Mobility and Immobility during Environmental Crises**

Venue: CASE Z48 Time: 10.30-12.00 Chair: Birce Altıok (*Koç University*)

Ayşe Perihan Kırkiç (*Florida International University*) & **Nilima Islam Luba** (*Florida International University*) - ***Migration Decision Making in MENA: The Role of Food Insecurity, Water Scarcity & Energy Access***

Manisha Mukherjee (*Maastricht University and United Nations University MERIT*) - ***Scorching Heat and Shrinking Horizons: The Impact of Rising Temperatures on Marriages and Migration in Rural India***

Roman Hoffmann (*International Institute for Applied Systems Analysis (IIASA)*) - ***Climate Change, Aridity, and Internal Migration: Evidence from Census Microdata for 72 Countries***

Els Bekaert (*Ghent University*) - ***Understanding the Role of Retain and Repel Factors Determining Voluntary Immobility Amidst Climate Change***

PARALLEL PANELS A4 **(Im)Mobility in Conditions of Crisis**

Venue: Founders Hall Time: 10.30-12.00 Chair: Eleonore Kofman (*Middlesex University*)

Simon Ruhnke (*Berlin Institute for empirical Integration and Migration Research, Humboldt University Berlin*) & **Laura Hertner** (*Berliner Institut für empirische Integrations- und Migrationsforschung (BIM), Humboldt Universität zu Berlin*)- ***On the Move Again? The Impact of Pre-disaster Characteristics on Post-disaster Mobility and Well-being Among Syrian Refugees in Turkey Following the 2023 Earthquakes.***

Deena Dajani (*International Institute for Environment and Development (IIED)*) - ***Travelling Im/mobility: Forced Migrants' Perspectives on and Definitions of Mobility Generated Through Comparative Research on Wellbeing***

Elisa Lanari (*Max Planck Institute for the Study of Religious and Ethnic Diversity*) - ***Beyond Crisis: Tracing the Afterlives of Refugee "welcome" In An Italian Mountain Region***

Liam Haller (*DeZIM Institute*) - ***Does A Migrant's Trajectory Affect Subsequent (Im)mobility Decisions? Modeling Migration Stage Probabilities Using Markov Chains***

	Venue	Time
LUNCH	Founders Hall	12.00-13.00

PLENARY SESSION II **Crisis Politics and the Future of Migration**

Venue: Founders Hall Time: 13.00-14.30 Chair: Daniela Vintila (*University of Liège*)

Soorej Jose Puthooppambil (*University of Upsala*) - *How does health 'crises' influence migration?: An Overview*

Didem Daniş (*Galatasaray University*) & **Deniz Sert** (*Özyeğin University*) - *Shattered Ground, Shifting Lives: Exploring Post-Earthquake Mobilities and Immobilities*

Giovanni Bettini (*Lancaster University*) - *Climate (Im)mobilities: Displacement, Escape and Mobility in the Climate Emergency*

Tamirace Fakhoury (*Aalborg University*) - *Refugee Policy and Temporalities of Mobility and Immobility*

PARALLEL PANELS B1 **Mobility and Immobility Against the Backdrop of Covid-19 and New Forms of Employment**

Venue: Founders Hall Time: 14.45-16.15 Chair: Carrie J. Preston (*Boston University*)

Eloise Thompson (*University of Neuchâtel & The nccr - on the move*) - *Governing the Mobility of Key Workers: Practices of Categorisation and Boundary-making Since the Outbreak of the COVID-19 Pandemic In the United Kingdom.*

Maria Luisa Caputo (*University of Parma*) & **Simone Baglioni** (*University of Parma*) - *"The Perfect Tempest", How the Covid-19 Pandemic and The Brexit Crises Impacted Labour Migrants and the Fishing Communities In the Scottish Outer Hebrides?*

Watfa Najdi (*Issam Fares Institute for Public Policy and International Affairs at the American University of Beirut / The International Institute of Social Studies*) & **Andreas Hackl** (?) - *Online Work as Humanitarian Relief? The Promise and Limitations of Digital Livelihoods for Syrian Refugees and Lebanese Youth During Times of Crisis*

Ali Zafer Sağıroğlu (*Ankara Yıldırım Beyazıt University, Migration Policy Center (AYBU-GPM)*) & **Hidayet Siddikoğlu** (*Hiroshima University, Japan*) - *Im/mobility in Post-COVID Times: The Case of the Turkman and Ozbek Migrants in Istanbul*

PARALLEL PANELS B2 **Migration as an Adaptation Strategy to Environmental Challenges**

Venue: Founders Hall 2nd Floor Time: 14.45-16.15 Chair: Giovanni Bettini (*Lancaster University*)

Lakshmin A. Mudaliar (*Australian National University*) - *The Emergence of Environmental Migration Management 'Best Practices' in the Pacific*

Mrittika Bhattacharya (*University of Bristol, UK*) - *Is Migration a Comprehensive Strategy for Adapting to Environmental Crisis?: A Closer Look into the Lived Experiences of Out-migrating Bangladeshi Women to India*

Meryem Ay Kesgin (*UN WFP*) & **Nur Duygu Keten Sav** (*Türk Kızılay*) & **Selman Salim Kesgin** (*Türk Kızılay*) & **Chris Mawhorter** (*UN WFP RBC*) - *Recovering From Earthquake As Refugees: The Case of Camp and Non-camp Refugees In Türkiye*

Alix Debray (*UNU-CRIS, Ghent University*) - *Irrigating Future Hopes: Migration Aspirations and Staying Preferences Amid Drought Challenges*

PARALLEL PANELS B3 **Return Migration during Polycrisis: Mobility in an Era of Immobility**

Venue: CASE124

Time: 14.45-16.15

Chair: Özge Bilgili (*Utrecht University*)

Simone Castellani (*University of Cadiz*) & **Heather McNamara** (*Università ta' Malta*) & **Daniela DeBono** (*University of Malta*) & **Irene Lopez García** (*University of Cadiz*) - ***Does Remote Work Facilitate Migrant Return? Snapshots of Intra-EU Mobility In the Post Pandemic Era***

Irene Tuzi (*Bielefeld University, Germany*) & **Agnes Ebenberger** (*IOM Baghdad*) - ***Enhancing Reintegration Assistance for Returned Migrants in “Polycrisis” Iraq: The role of the National Referral Mechanism (NRM)***

Zeynep Sahin Mencütek (*Bonn International Centre for Conflict Studies*) & **Ruth Selma Vollmer** (*Bonn International Centre for Conflict Studies*) - ***“Asylum seeking as the crisis?” Utilization and Impacts of Crisis Narratives In Return Governance***

Richa Shivakoti (*Toronto Metropolitan University*) - ***Pandemic Returns of Temporary Labour Migrant Workers to Nepal***

PARALLEL PANELS B4 **(Im)mobilities in Unstable Contexts: Insights from MIGNEX Research**

Venue: CASE Z48

Time: 14.45-16.15

Chair: Ayşen Üstübcü (*Koç University*)

Leander Kandilige (*Centre for Migration Studies, University of Ghana and Research Associate, Refugee Studies Centre, University of Oxford*) - ***Multi-level Development Impacts of Migration: Evidence From a Qualitative Cross-Country Study***

Muhammad Rashid Memon (*Qatar University*) - ***Exploring Women's Agency under Male Breadwinner Norms***

Furrukh A. Khan (*Lahore University of Management Sciences, Pakistan*) - ***Humanizing the ‘Denki’: Undocumented Migration, Agency and Knowledge Creation***

Pinar Ensari (*Koç University*) - ***Bordering on opportunity: Intersecting crises, mobility, and economy in the Turkey-Georgia borderlands***

PARALLEL PANELS C1 **Intersectional Dimensions of Crisis in Migration and Displacement**

Venue: Founders Hall **Time:** 16.30-18.00 **Chair:** Ayşem Biriz Karaçay (*Istanbul Commerce University*)

Mengia Tschalär (*John Jay College of Criminal Justice, City University of New York*) - **Queering Migration Temporalities: LGBTQI+ Experiences with Waiting Within Germany's Asylum System**

Hannah Haycox (*University of Strathclyde*) & **Daniela Sime** (*University of Strathclyde*) & **Emmaleena Käkelä** (*University of Strathclyde*) - **Gen-Migra: The Gendered Dimensions of a Polycrisis and Consequences for Migrant Women and Their Families**

Neelam Raina (*Middlesex University*) - **Interacting Crisis, Intersectional Impact And The Resilience Of Silos – A South Asian Perspective**

Yolanda Hernández-Albújar (*Universidad Loyola Andalucía*) & **Alfonso Sanchez** (*Universidad Loyola Andalucía*) & **Sergio Fernández Artamendi** (*Universidad Loyola Andalucía*) - **Gendered Perceptions of Climate Change and their Influence on Migration Intentions**

PARALLEL PANELS C2 **Global Protection Crisis and the International Refugee Regime**

Venue: Founders Hall 2nd Floor **Time:** 16.30-18.00 **Chair:** Gerasimos Tsourapas (*University of Glasgow*)

Jasmin Lilian Diab (*Institute for Migration Studies, Lebanese American University*) & **Sinem Kavak** (*Lund University*) - **Refugee Decision Making in Turkey and Lebanon: Cascading Impacts of the International Refugee Protection Regime on Agency in Mobility and Immobility**

Gerasimos Tsourapas (*University of Glasgow*) & **Irene Fernandez-Molina** (*University of Exeter*) - **Migration Power Europe: Cooperation & Crisis in the EU Periphery**

Eleonore Kofman (*Middlesex University*) & **Sobia Kapadia** (*UKRI's Gender, Justice, and Security Hub*) & **Runa Lazzarino** (?) - **Interconnected and Multiple Crises: Impact on Displacement and Migrations Between and Within Afghanistan and Pakistan**

Müge Dalkıran (*Koç University, MiReKoc*) - **Spatio-legal Analysis of a Polycrisis: The Impact of the Covid-19 Pandemic, Restrictions on Asylum Rights, and Violence on the Mobility of Refugees In the Island of Lesbos**

PARALLEL PANELS C3 Youth, Existential Crisis, Resilience and In Times of (Im)mobilities

Venue: CASE124

Time: 16.30-18.00

Chair: Wiebke Sievers (*Lancaster University*)

Giulia Marroccoli (*University of Turin*) & **Roberta Ricucci** (*University of Turin*) - *Chasing a Dream of Inclusion: Immigrant Descendants In Italy Between Crises and Mobility Strategies*

Ester Gallo (*University of Trento*) - *Polycrisis and Eduscapes: Conceptualising Im-Mobility Among Displaced Scholars*

Önver A. Cetrez (*Uppsala University*) - *Broken Borders, Unbroken Wings: Migrants' Resilience, Meanings, and Existential Concerns*

Ahmad Aryan Karimi (*UBC - Max Planck Institute*) - *Wartime (Im)Mobilities: Effects of Aspirations-Capabilities on Displaced Ukrainians in Canada, Germany, and Ukraine*

PARALLEL PANELS C4 Solidarity during Polycrisis: Politicisation, Diasporas and Migrant Transnationalism

Venue: CASE Z48

Time: 16.30-18.00

Chair: Peter Scholten (*Erasmus University Rotterdam*)

Shibinu S. (*PSMO College*) & **Muhammad Haseeb** (*PSMO College*) - *Kerala's Diaspora Philanthropy Engagement in Times of Crises*

Margit Feischmidt (*Research Centre for Social Sciences Budapest*) & **Violetta Zentai** (*Democracy Institute of the Central European University, Budapest-Vienna*)- *Potentials and Limitations of Civic Support for Refugees and Migrants During Rising Xenophobia and in Shrinking Democracies*

Domiziana Turcatti (*NIESR, University of Oxford*) & **Jasmin Rostron** (*NIESR, University of Oxford*) - *Agency and Mobilisation in Times of Crisis: London's Latin American Community Navigating the Impact of COVID-19*

Laura Oso (*ESOMI, Universidade da Coruña, Spain*) & **Raquel Martínez Buján** (*Universidade da Coruña*) - *Welfare Strategies of Transnational Families In the Face Systemic Crises*

	Venue	Time
DINNER	CASE 124	18.00-19:45

DAY 3
19.04.2024

KEYNOTE SPEECH

Venue: Founders Hall **Time:** 9.00-10.15

Anna Triandafyllidou (*Toronto Metropolitan University*) - *What crisis? Whose (im)mobility?*

PARALLEL PANELS D1 Imagery and Narratives of Migration and Polycrisis

Venue: Founders Hall **Time:** 10.30-12.00 **Chair:** Sedef Turper (*Koç University*)

Maarja Vollmer (*The nccr - on the move / University of Neuchâtel*) - *Mapping Migration Narratives: Evolving Perspectives and Public Opinion During Times of Crisis*

Elena Giacomelli (*University of Bologna*) & **Valentina Cappi** (*University of Bologna*) & **Pierluigi Musarò** (*University of Bologna*) - *De-bordering Environmental Migration: An Analysis of Information Campaigns on Climate Change-induced Migration*

Carrie J. Preston (*Boston University*) - *The Mobilities of Little Amal through States in Polycrises*

Karolina Nikielska-Sekuła (*Centre of Migration Research, University of Warsaw*) - *Governing Migration Through Visuals in Times of Crisis*

PARALLEL PANELS D2 Displacement in Eastern Europe: Mobilities and Immobilities

Venue: Founders Hall 2nd Floor **Time:** 10.30-12.00 **Chair:** Birce Demiryontar (*Koç University*)

Sergey Ryazantsev (*Federal University of Sao-Carlos (FUSCar, Brazil) and University of Campinas (UNICAMP, Brazil)*) - *Trends of Forced Migration in the Context of the Russian-Ukrainian Military Conflict 2022-2023 and their Impact on Brazil*

Anastasiia Mykolenko (*University of Montreal*) - *Przemysl as a Place of Migratory Trajectories Co-production for Displaced Ukrainians*

Oleksandra Deineko (*Norwegian Institute for Urban and Regional Research (NIBR)*) & **Aadne Aasland** (*OsloMet*) - *Starting Life Afresh? Exploring the Variety of Strategies for Labor Integration Among Ukrainian Refugees in Norway*

Akhagba Omoye (*Collegium Civitas Warsaw, Poland*) - *Migration and Health: Mapping Menstruation Poverty in Polish Refugee Camps*

PARALLEL PANELS D3

Navigating Mobility and Immobility: From Diplomacy to Human Rights, Conceptualizing, and Addressing Crises

Venue: CASE 124

Time: 10.30-12.00

Chair: Jean-Michel Lafleur (*University of Liège*)

Özgun Topak (*York University*) - *Polycrisis and Migrants' Entrapment in Libya*

Tuba Bircan (*Free University of Brussels (VUB)*) & **Haodong Qi** (*Malmo University*) - *Climatic Crossroads: Rethinking Migration in an Era of Environmental Unpredictability*

Damla Bayraktar Aksel (*Bahçeşehir University*) & **Gülece Şenel** (*Bahçeşehir University*) - *The Portability of Social Rights in Times of Crises*

Zeynep Yanaşmayan (*DeZIM-Institut*) & **Ramona Rischke** (*DeZIM-Institut*) & **Lukas Marian Fuchs** (*DeZIM-Institut*) - *Navigating multiple Crises: The Influence of Life Course Events on the Return and Re-migration Aspirations of Afghan Refugees in Germany*

PARALLEL PANELS D4

Health and Wellbeing in Times of Polycrisis

Venue: CASE Z48

Time: 10.30-12.00

Chair: Souad Osseiran (*Boğaziçi University*)

Eleonora Miaci (*Sapienza University of Rome/ University of Milan*) - *How health shapes fertility intentions: A UK Study on Native and Migrant Responses to COVID-19 infection*

Farjana Islam (*Heriot-Watt University, UK*) & **Gina Netto** (*Heriot-Watt University, UK*) & **Agnes Kukulska-Hulme** (*Open University, UK*) - *Digital Mobilities and Immobilities in Accessing Health Services: The Experiences of Minoritised Ethnic Communities in Accessing and Using Primary Care Services in The UK*

Molly Gilmour (*University of Glasgow*) & **Belal Shukair** (*Independent Syrian Researcher*) & **Ibrahim Bou Orm** (*University Saint Joseph Beirut*)- *A Chronicle of Crises: Continuity and Change in the Care of Children with Noncommunicable Diseases in Lebanon*

Friedrich Gerd Poeschel (*Eurac Research*) - *Medical Diasporas as Insurance Against Public Health Crises*

	Venue	Time
CLOSING CONFERENCE	Founders Hall	12.15-12.45
LUNCH	Founders Hall	12.45-13.45

SOCIAL ACTIVITY

Bosphorus Trip to Yoros Castle



Embark on a journey through the ages at Yoros Castle, an iconic landmark nestled along the scenic shores of the Bosphorus in Istanbul.

Perched atop a lush hilltop, Yoros Castle commands panoramic views of the shimmering waters below, providing a picturesque backdrop for exploration and discovery. Delve into the rich tapestry of stories that have unfolded within these stone walls over centuries, from Byzantine emperors to Ottoman sultans, each leaving their indelible mark on this storied site.

A ferry trip to Yoros Castle promises an unforgettable adventure in the heart of Istanbul's natural and cultural splendor.

Departure: Sarıyer Pier

Time: 15:20

Castle Fee: Free

Ferry fee: Payment by Istanbul Card at Pier

GENERAL INFORMATION

Transportation upon Arrival to Istanbul

From the airport, you may reach the city centre using several options:

- Taxi services are available 24/7 from designated taxi ranks at the airport exits. Taxi meters in Istanbul starts at 24,55 TRY (approx., 0.79 \$/ 0.74€).
- The shuttle services from the airport to different locations within the city are available 24/7
- The metro now runs from Istanbul Airport to Kağıthane where you can change to the M2 line.
- You can find more information, ticket price and shuttle schedules from: <https://hava.ist/en>

For more details about transportation from airport: <https://www.istairport.com/en/airport/airport-transportation/urban-transportation/public-transportation/?locale=en>

Transportation to Koç University

Metro & Bus

The easiest way to get to Koç University with public transit is by using the metro line M2 (Yenikapı - Haciosman). Go to Haciosman (last station), then taking a taxi to the campus. Alternatively, it is possible to take a bus from Haciosman metro station to the campus:

- 154 Haciosman - Koç University
- 150 Haciosman - Rumelifeneri (Bus stops outside KU main entrance, 20 min walk to conference venue)

Transportation within Istanbul

ISTANBUL CARD

You can use your Istanbulkart in all member businesses and corporations with Istanbulkart Electronic Toll Collection System integration. It is as easy to use as placing your card on the card readers found on the turnstiles or validator devices found on public transportation vehicles (Bus, IETT, Subway, Tram, Cable Car, Marmaray, Metrobus, Ferry, etc.)

Istanbulkart can be purchased from the vending machines at the stops of Metrobus, Metro, Tram, and Bus.

For more information: <https://www.istanbulkart.istanbul/>

The payment of the transportations can also be completed through “Istanbulsenin” app and credit card. Please be informed that credit card payment may not accepted method for some transportations.

On-Campus Services

On-campus conveniences include a grocery store, full-service bank, cafeterias and other dining options.

Please note that on-campus services may change in semester breaks.

You can click on the link below for more information about campus facilities and services:

<https://ogs.ku.edu.tr/en/facilities-directorate/campus-services>

Wireless

The Rumelifeneri Campus has a metro internet connection with a capacity of 1500 Mbps providing access to video conferencing and standard internet services (WWW, FTP, telnet, e-mail, VPN, etc.) The total bandwidth of Koç University's internet connections is over 2.1 Gbps.

– The “Guest” wireless network provides limited, open and unencrypted access to guests.

For detailed information: <https://help.ku.edu.tr/ithelp/network-and-wireless>

Library

Suna Kıraç Library is 7/24 hours open. Please see the guidelines below for external visitors.

<https://library.ku.edu.tr/en/services/using-the-library/external-members/>

Health Emergencies

The campus Health Center has 5 physicians, 1 nurse and 8 medical assistants operating 24/7. You may reach them for emergencies as follows:

- For Fener (Main) Campus, by dialing university extension “1273” or “0212-338 1273” from mobile phones and external land-lines.
- For details please visit their website hc.ku.edu.tr

The nearest hospital is Acıbadem Maslak Hospital, which is located in Darüşşafaka (Address: Darüşşafaka Mahallesi, Büyükdere Cd No No:40, 34457 Sarıyer).

You can also use the Koç University Hospital, which is in Topkapı (Address: Davutpaşa Caddesi No:4 34010 Topkapı, İstanbul)

There are pharmacies located near campus and they typically operate between 09:00-19:00 on weekdays and until 13:00 on Saturdays. To find a pharmacy outside of the regular working hours you need to find the pharmacy on duty in your area. After 19.00, there are several pharmacies are getting pharmacy on duty till next morning shift.

Accommodation

Istanbul offers great diversity with respect to hotel options. There are numerous five and four-star hotels in close to Istiklal street, that are walking distance to M2 metro line stations (Taksim & Şişhane metro stations).

It is necessary to note that the Koç University campus is in northern part of the city in the hills of Sarıyer. It is around 40 minutes by metro from the central area of Taksim.

Fuat Pasa Hotel (Sarıyer): ≈111 Euro/120 USD per night

Distance to Koç University: 7,8 km / Approx. 20 mins to University by car or public transportation. (Closest hotel to Koç University)

Bilek Hotel (Levent): 90 Euro + Taxes (Please contact the hotel via e-mail before reserving to indicate your participation in the IMISCOE conference to benefit from the reduced price)

Distance to Koç University: 14km / Approx. 45 mins to University by public transportation

Point Hotel (Taksim): ≈155 Euro/166 USD per night

Distance to Koç University: 20km / Approx. 55 mins to University by public transportation

The Marmara Hotel (Taksim): 198 Euro/ ≈210 USD per night

Distance to Koç University: 20km / Approx. 60 mins to University by public transportation

The Marmara Pera Hotel (Taksim): ≈135 Euro/143 USD per night

Distance to Koç University: 21km / Approx. 60 mins to University by public transportation

Hilton (Maslak/Sarıyer): 192 Euro/207 USD per night

Distance to Koç University: 12km / Approx. 45 mins to University by public transportation